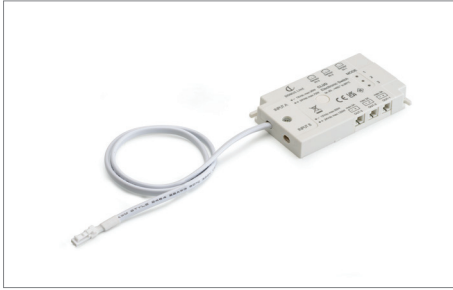




**SWS**  
HARDWARE



**CLUD ECB**  
control module

|            |                    |
|------------|--------------------|
| Input      | 12-24Vdc           |
| Output     | 12-24Vdc           |
| Power      | 36-72W (60-120W)*  |
| Wiring IN  | 200mm Micro24 male |
| Wiring OUT | 3X Micro24 female  |



\* Available configuration for max. load of 60W @12Vdc and 120W @24Vdc wired with LED Converter.

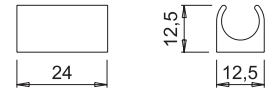
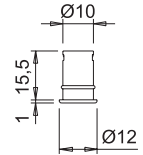


**IR-1**  
back-door proximity sensor

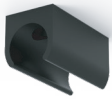
|           |        |
|-----------|--------|
| Cablaggio | 2000mm |
|-----------|--------|



The IR-1 sensor in limit switch mode activates the luminaires of lighting with the opening of the door. The three sensors operate independently. By pressing the key on control unit it is possible to change the set-up with two sensors operating in common and one independent, or with the three sensors operating in common.



The sensor can be installed recessed or on the surface with the support supplied as standard.



**CLUD**

multiple sensor electronic control system



CLUD is a multiple sensor electronic control system for LED luminaires. The electronic control module, with double input (max. 3A or 5A), and three female Micro24 output (max. 3A), is connected between the power supply and the lamps (both 12Vdc and 24Vdc), and can drive up to three back-door infrared sensors. The electronic control module comes with factory set-up for the use of the IR-1 sensor in independent switch mode, and integrates a set-up button with which the function can be selected at any time.

